

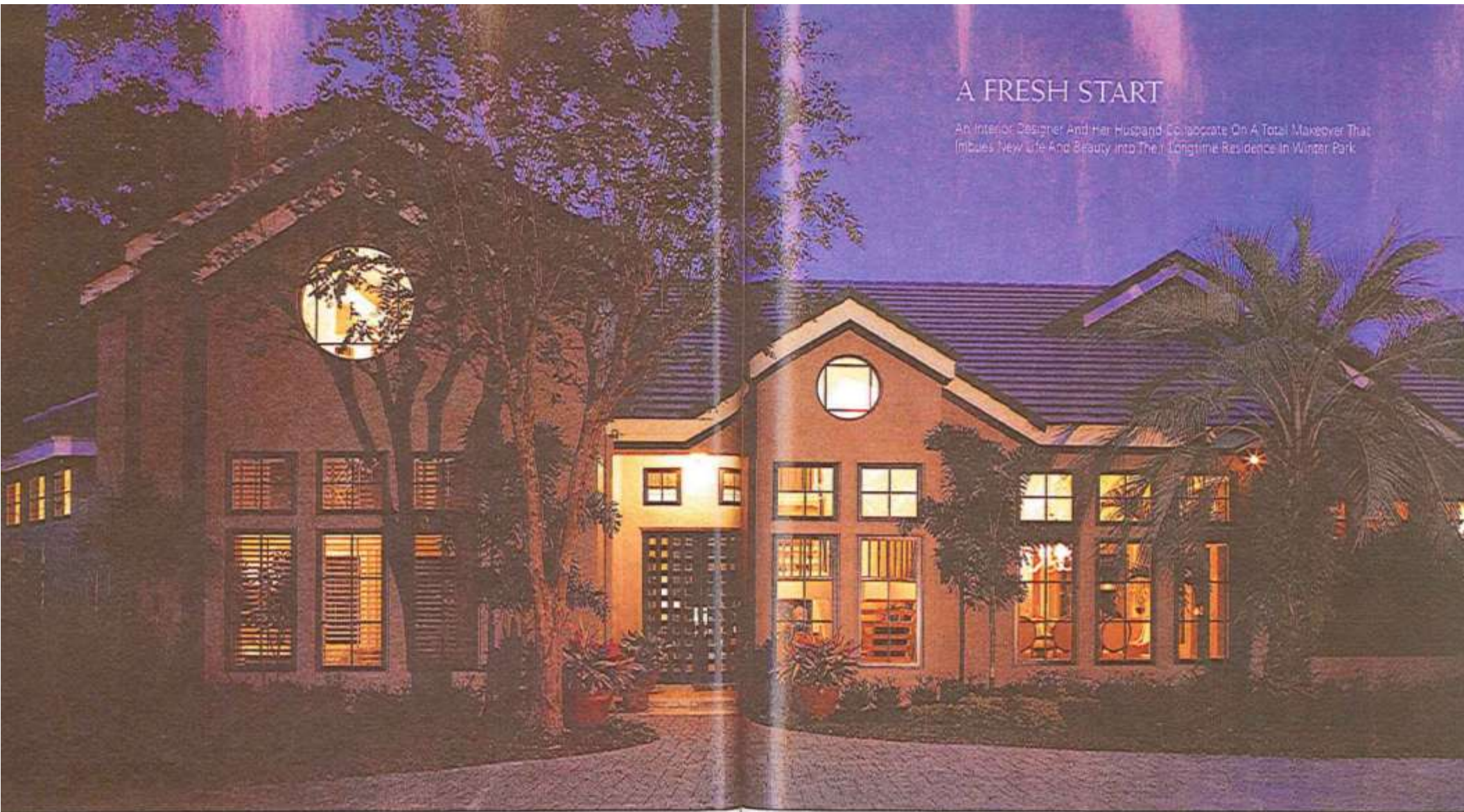
# FLORIDA DESIGN

THE MAGAZINE FOR FINE INTERIOR DESIGN & FURNISHINGS

VOLUME 1892

WHAT'S NEW IN  
OUTDOOR LIVING





## A FRESH START

An Interior Designer And Her Husband Collaborate On A Total Makeover That Infuses New Life And Beauty Into Their Longtime Residence In Winter Park

INTERIOR DESIGN Betsy Godfrey, Godfrey Design Consultants, Inc., Winter Park, FL  
BUILDER Charles Clayton, Charles Clayton Construction, Inc., Winter Park, FL  
TEXT De Schofield  
PHOTOGRAPHY Kim Sargent, Palm Beach Gardens, FL

ABOVE: Replacing the home's windows and exterior doors, with the exception of the entrance double doors custom designed by interior designer and homeowner Betsy Godfrey, gives the image of a new house.

**JUST AS A GOOD MARRIAGE ENDURES** the test of time, a house with good bones withstands updates to suit the inevitable lifestyle changes that occur over the years. Such was the case with owners Betsy Godfrey, an award-winning interior designer, and husband Murray Brooks who, after living in their home for almost two decades, determined it was long overdue for a change.

ARCHITECTURAL ELEMENTS AND INCREASED NATURAL LIGHT ENHANCE THE OPEN FLOOR PLAN," BUILDER CHARLES CLAYTON SAYS



The impetus for change was a desire for a ground-floor master suite. "At the time, we also owned a condominium in Naples, Fla., and a house in Aspen, Colo., plus Betty was traveling a lot for work," Brooks says. "It seemed we were constantly hauling suitcases up and down the steps, and we began thinking how much more convenient it would be to have our bedroom downstairs."

But before long, the idea of a simple addition escalated to much grander plans and the couple enlisted builder Charles Clayton, a longtime friend of Brooks'. "At first, we just wanted a new master suite, then we decided to add a lanai, which led to ideas for the kitchen," Godfrey says. "Before we knew it, we were planning to totally gut the interiors and start fresh."

**LEFT:** The living room culminates in a wall of glass that reveals "Siren I," a bronze by Barbara Sorensen. An olive and taupe Tibetan area rug defines the main conversation grouping that features a pair of Donghia sofas covered in antique velvet by Beacon Hill. Photography by Raymond Martinot, New Smyrna Beach, FL.

**BELOW:** In the dining area, host chairs from Herndon and side chairs from Traditional Imports surround an Emanuel Morez table. To give the original wrought-iron stairway more prominence as an architectural element, Godfrey extended the wall and added windows.



The expansion nearly doubled the home to a total of 6,200 square feet. Two of the biggest challenges involved the new master suite and an expansive loggia, which necessitated reconfiguring the original pool to better align with the new floor plan. "The special relationship of the new pool makes all the difference in the way the inside/outside elements of this house relate and flow seamlessly," Clayton says.

Inside, a neutral palette, luxurious finishes and eclectic furnishings take this house to a signature level. The living room introduces the home's indoor/outdoor theme with a floor-to-ceiling window framing a view of the pool

Carol Beeble's painting, "Duet," hangs in the living room above a baby grand piano and a French chair in Pollock fabric. "I love to layer a home with collectibles," Godfrey says. "I believe that it adds soul to the residence."

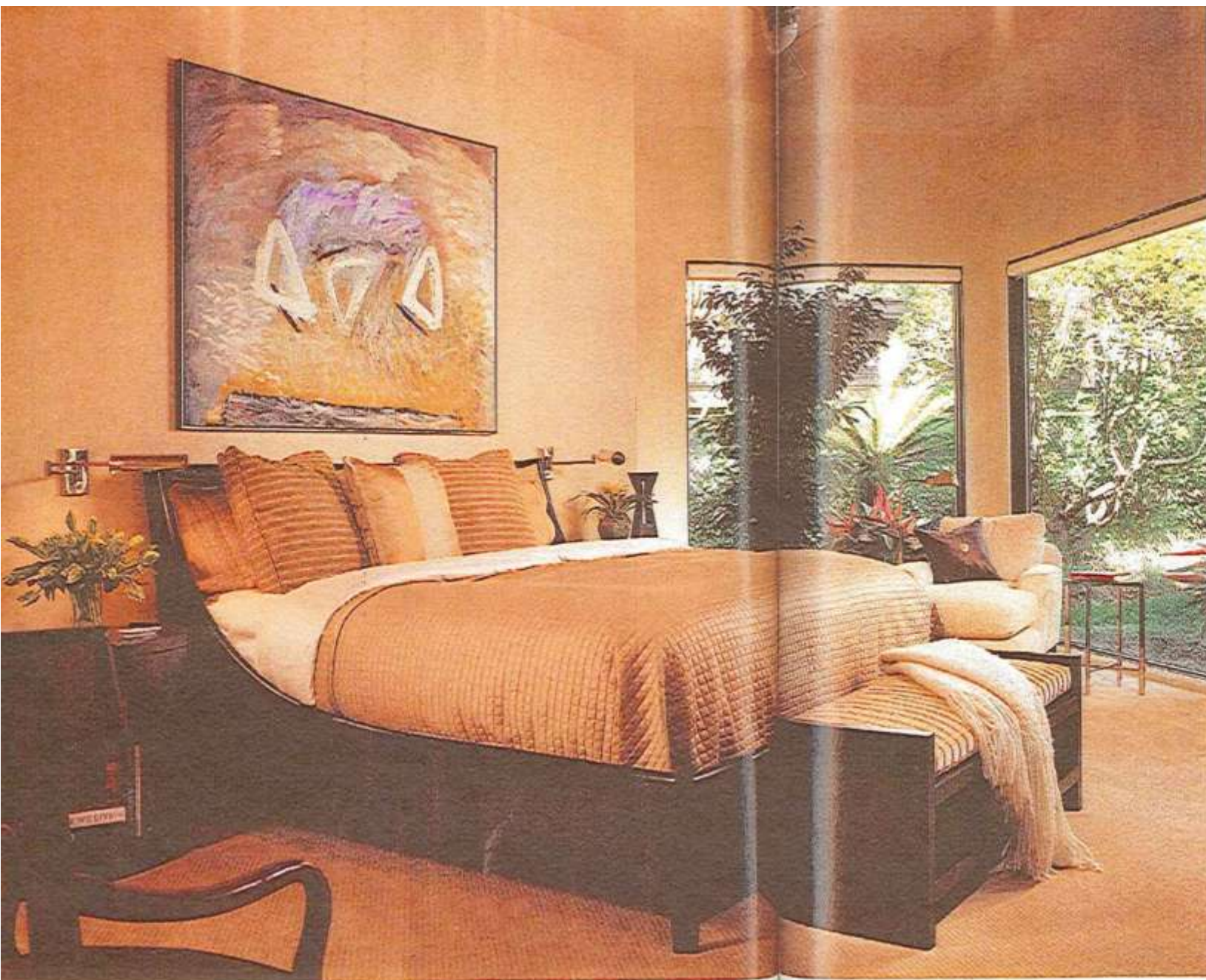


and lush landscaping. A sophisticated grouping placed to capture the view includes a pair of sofas and a Lucite cocktail table that Godfrey purchased in the 1980s. Nearby, 50-year-old wingback chairs originally belonging to Brooks' mother sit opposite a baby grand piano and a French cane-back chair. All are grounded by a backdrop of russet-toned flooring made up of Doussie wood, a type of African teak that continues throughout the dining area and family room.

Light floods the dining area through a wall of windows that supply a view toward the front of the property. Here, one of the owners' favorite pieces of art, a painting of horses by Joe Andoe, decorates the walls. Another by artist Mari M. Conneen displays on the landing of the wrought-iron stairway, which separates this area from the adjacent foyer. An oval, walnut dining table surrounded by six Italian-style chairs and a pair of wingback chairs provides seating for formal dinner parties.

RIGHT: A ceiling of cherry-wood beams in a grid formation delineates the family room. An informal grouping includes a pair of leather lounge chairs from Hancock & Moore flanked by two sofas accented with pillows in a Larsen print. A surround of soap slabs covers the enlarged fireplace.





For large, informal gatherings, the couple makes use of their open-plan family room. At one end of the room, a conversation grouping focuses on a wall of custom-designed, cherry-wood cabinetry that houses a fireplace and a plasma television. Floor-to-ceiling windows provide a view of the grounds at the back of the property.

Nearby, in the newly designed master suite, a contemporary-style sleigh bed centers the space. The luxuriously appointed retreat features a neutral palette of cream tones layered with textural influences.

The home's feature addition, a generous-sized loggia complete with a summer kitchen, offers both dining and conversation areas. "The loggia extends the interior and works seamlessly with the indoors for parties," Clayton says.

Godfrey and Brooks now maintain full-time residence in their renovated quarters. Bestowed with a host of industry acclaim, including six Aurora awards, the house perfectly suits its discriminating owners who attest that the rigors of the makeover were well-worth the effort.

LEFT: An abstract painting by Rene Haro, titled "Delta," displays in the master suite, where a bench from Baker Furniture covered in Bergamo fabric sits before a contemporary-style wood and rattan sleigh bed by McGuire.

**SOURCES**

**Entrance Exterior**

Entrance door - Custom designed by Godfrey Design Consultants, Inc., Winter Park, FL

**Living Room**

Sofas - Donghia Furniture, Donghia Showrooms, Inc., DCOTA, Dania Beach, FL

Fabric - Beacon Hill Exclusives, Robert Allen/Beacon Hill, DCOTA, Dania Beach, FL

Lounge chair and French chair cushion fabric - Pollack, Donghia Showrooms, Inc., DCOTA, Dania Beach, FL

Occasional table between lounge chairs - Hickory Chair Co., Hickory, NC

Head sculpture on cocktail table -

The Paris flea Market, Paris, France

Bronze sculpture outside by pool -

Barbara Sorensen, Winter Park, FL

Area rug - Carpet Designs, Inc., Naples, FL

Flooring - Kahrs International,

Altamonte Springs, FL

**Dining Area**

Table - Emanuel Moroz, Turner Greenberg

Assoc., DCOTA, Dania Beach, FL

Host and hostess chairs - Henredon,

International Design Source, Naples, FL

Side chairs - Traditional Imports,

Los Angeles, CA

Host and hostess chair fabric, one side

chair front and seat fabric - Beacon Hill

Exclusives, Robert Allen/Beacon Hill,

DCOTA, Dania Beach, FL

Side chair back fabric - Bergamo, Nescon

Showroom, DCOTA, Dania Beach, FL

**NOTE:** Barbara Sorensen's "Pyramid Pieces" decorates one wall of the loggia, while comfortable Brown Jordan furnishings create a cozy setting hearthside.

